

# **THALLUS ORGANIZATION- CHLOROPHYCEAE**

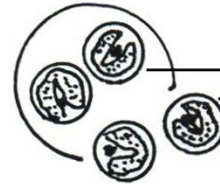
**Dr. M.BALUSWAMI**

[balumcc@gmail.com](mailto:balumcc@gmail.com)

# THALLUS ORGANIZATION IN CHLOROPHYCEAE

## 1. UNICELLULAR COCCOID FORMS:

**CHLORELLA**



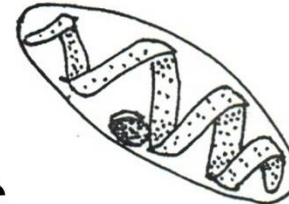
**AUTOSPORES**

**CHLOROCOCCUM**

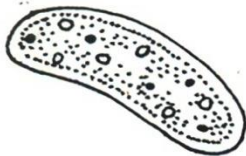


**SWARMER**

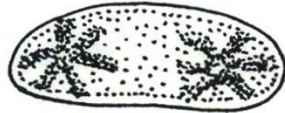
**SPIROTAENIUM**



**CYLINDROCYSTIS**



**MESOTAENIUM**



**COSMARIUM**



**CLOSTERIUM**

**NETRIUM**



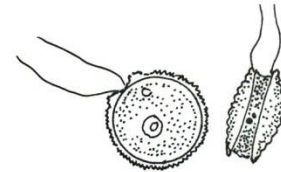
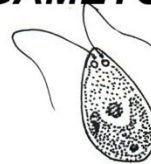
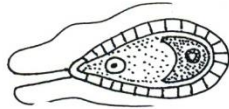
# THALLUS ORGANIZATION IN CHLOROPHYCEAE

## 2. UNICELLULAR MOTILE FORMS

**MEDUSOCHLORIS**

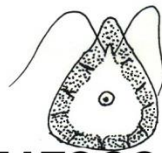
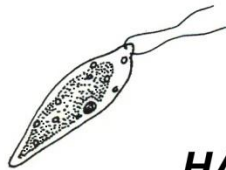


**C. EUGAMETOS**



**DUNALIELLA (NAKED)**

**PHACOTUS**

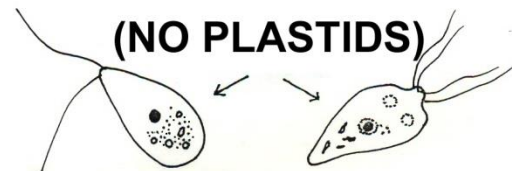
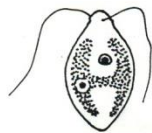


**HAEMATOCOCCUS**

**C. ZYGNEMOIDES**

**CHLOROGONIUM**

**C. RETICULATA**



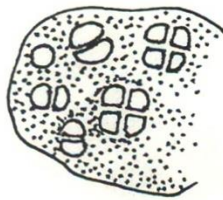
**C. PSEUDOGLOE**

**POLYTOMA**

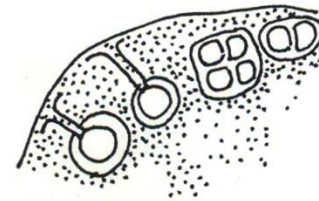
**POLYTOMELLA**

# THALLUS ORGANIZATION IN CHLOROPHYCEAE

## 3. PALMELLOID, TETRASPORAL & DENDROID FORMS



**PALMELLA**



**TETRASORA**

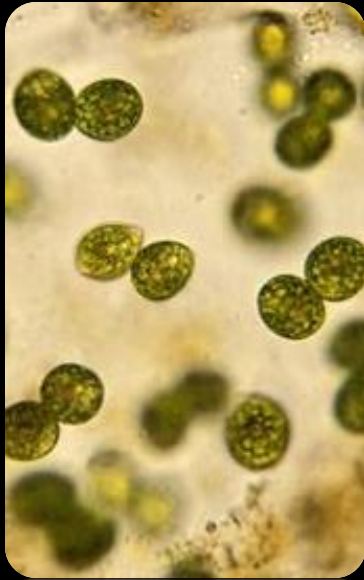


**CHLOROGONIUM  
STENTORIUM**

**ANKISTRODESMUM  
FALCATUS**

**DENDROID FORMS**

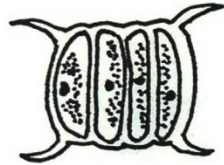
# PALMELLOID, TETRASPORAL AND DENDROID FORMS



# THALLUS ORGANIZATION IN CHLOROPHYCEAE

## 4. COENOBIA - NON-MOTILE COENOBIA

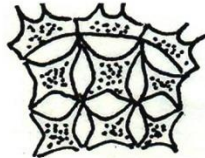
***SCENEDESMUS***



***PEDIASTRUM SP.***



***PEDIASTRUM DUPLEX***



***HYDRODICTYON***



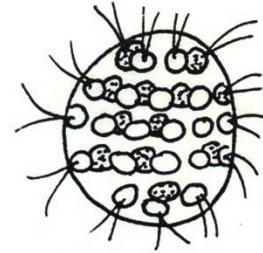
# THALLUS ORGANIZATION IN CHLOROPHYCEAE

## 5.COENOBIA - MOTILE COENOBIA

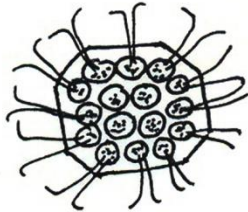
**PANDORINA**



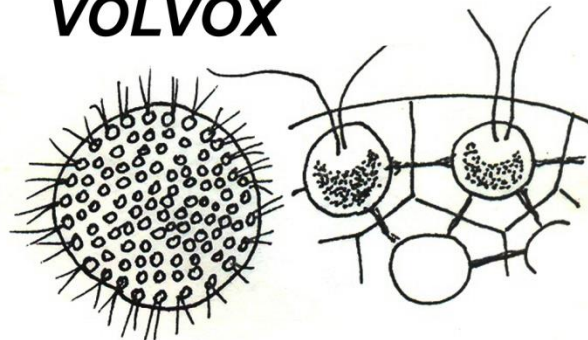
**EUDORINA**



**GONIUM**



**VOLVOX**



# THALLUS ORGANIZATION IN CHLOROPHYCEAE

## 6. FILAMENTOUS THALLUS ORGANIZATION - UNBRANCHED FILAMENTOUS THALLUS ORGANIZATION

**MICROSPORA**



**ULOTHRIX**

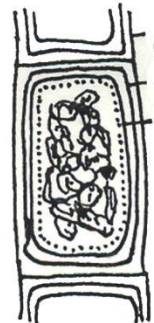


PECTIN  
CELLULOSE

**SPHAEROPLEA**

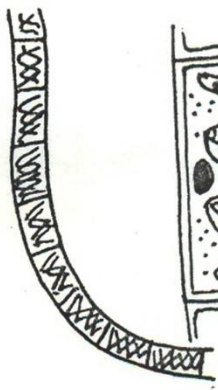


**OEDOGONIUM**

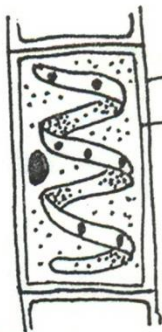


CHITIN  
PECTIN  
CELLULOSE

**SPIROGYRA**



**ZYGNEMA**



PECTIN  
CELLULOSE



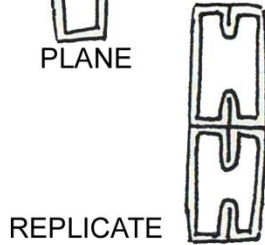
**SEPTA**



PLANE



COLLIGATE



REPLICATE



H - PIECE



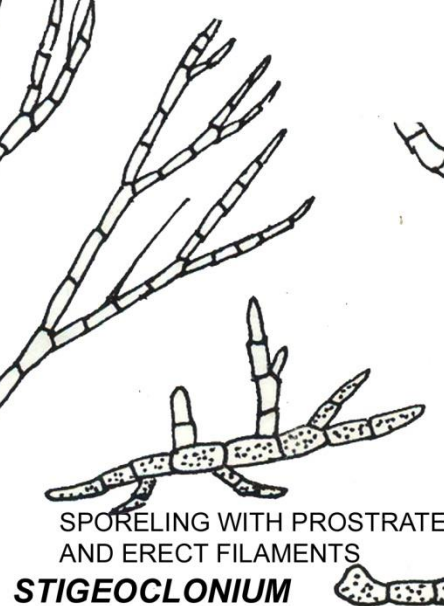
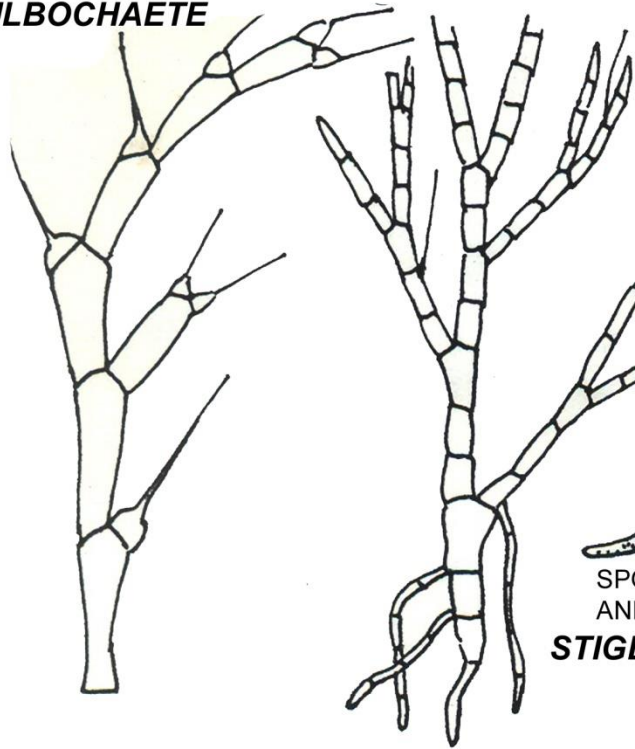
# THALLUS ORGANIZATION IN CHLOROPHYCEAE

## 7. FILAMENTOUS THALLUS ORGANIZATION

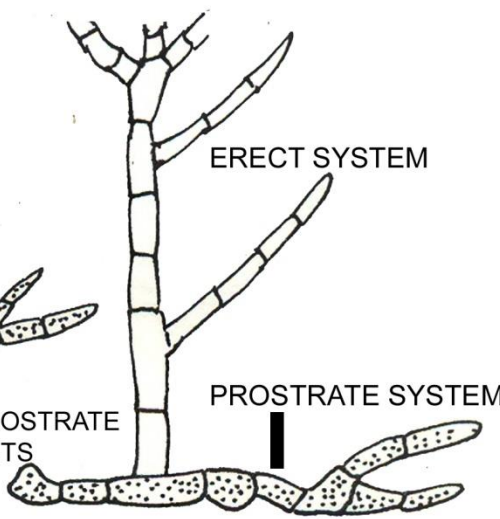
HOMOTRICHOUS

HETEROTRICHOUS

*BULBOCHAETE*



*STIGEOCLONIUM*

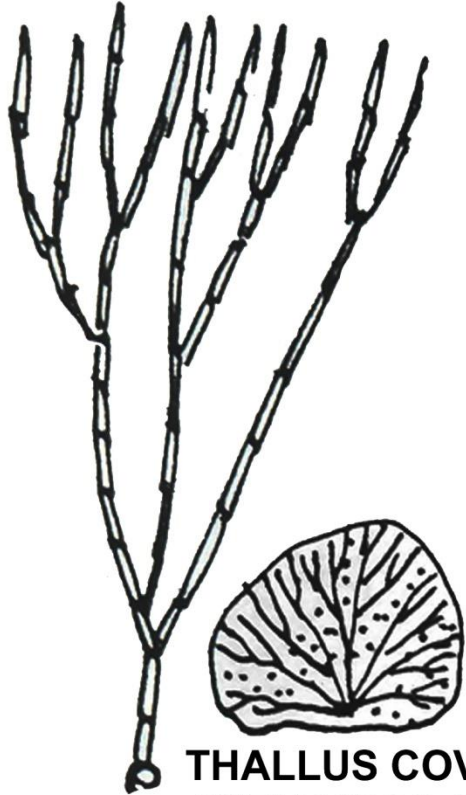


*TRENTIOPHLIA*

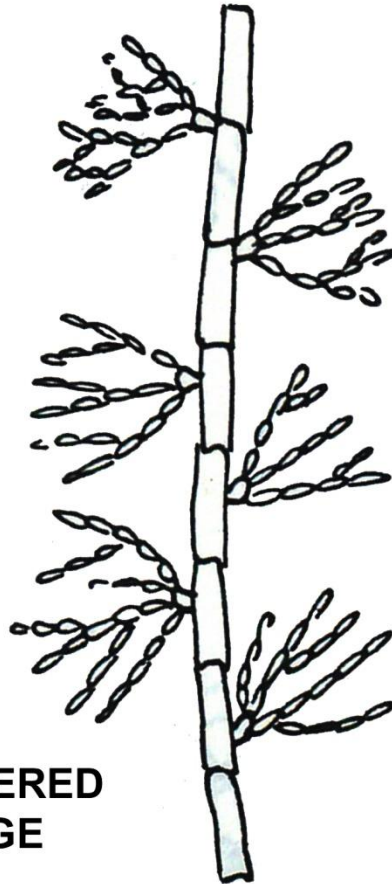
# THALLUS ORGANIZATION IN CHLOROPHYCEAE

HETEROTRICHOUSLY BRANCHED FILAMENTOUS THALLUS ORGANIZATION

**CHAETOPHORA**

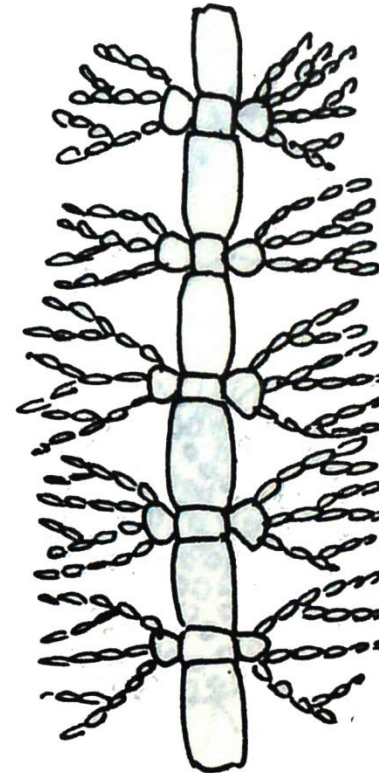


THALLUS COVERED  
WITH MUCILAGE



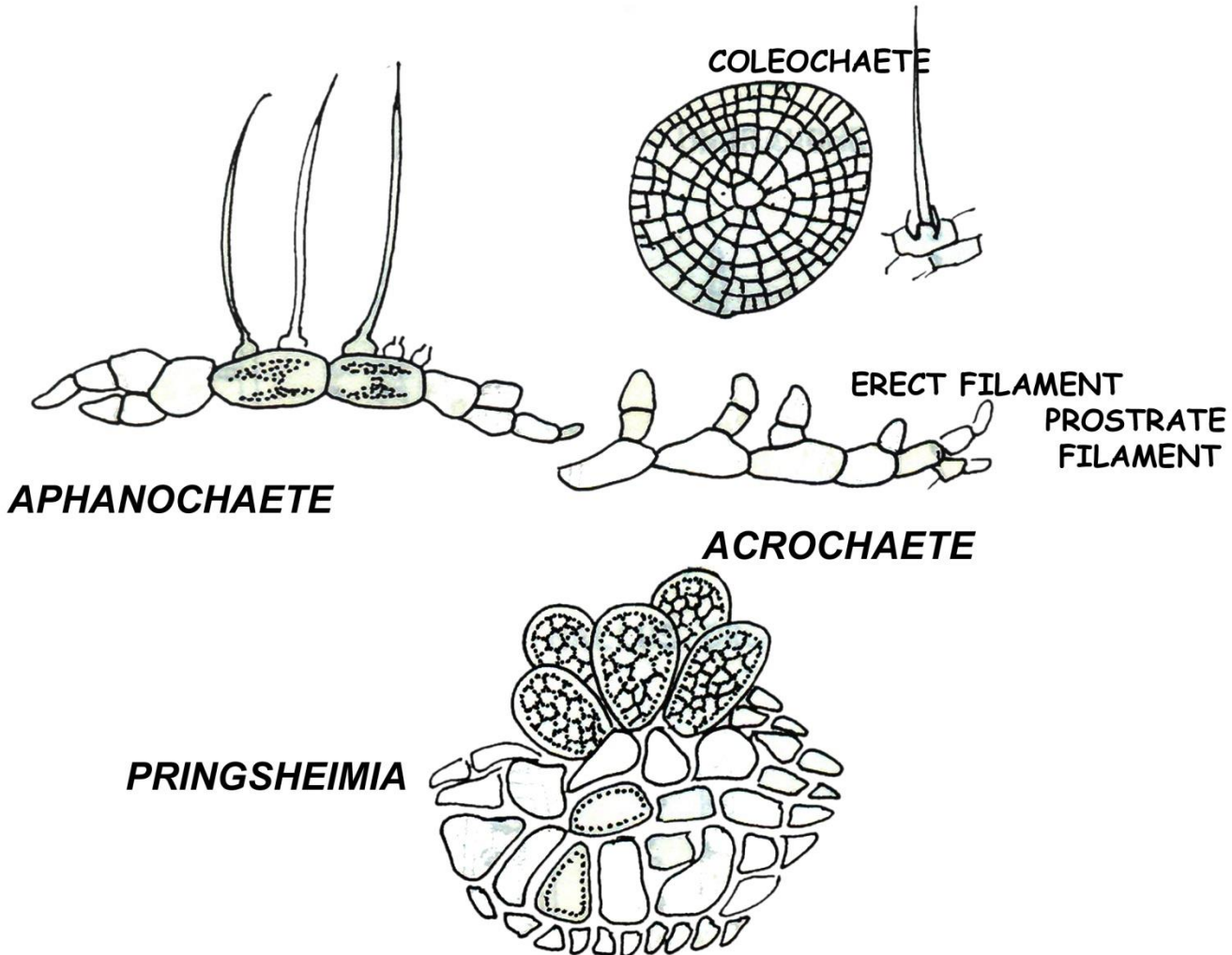
**DRAPARNALDIA**

**DRAPARNALDIOPSIS**



# THALLUS ORGANIZATION IN CHLOROPHYCEAE

HETEROTRICHOUSLY BRANCHED FILAMENTOUS THALLUS ORGANIZATION

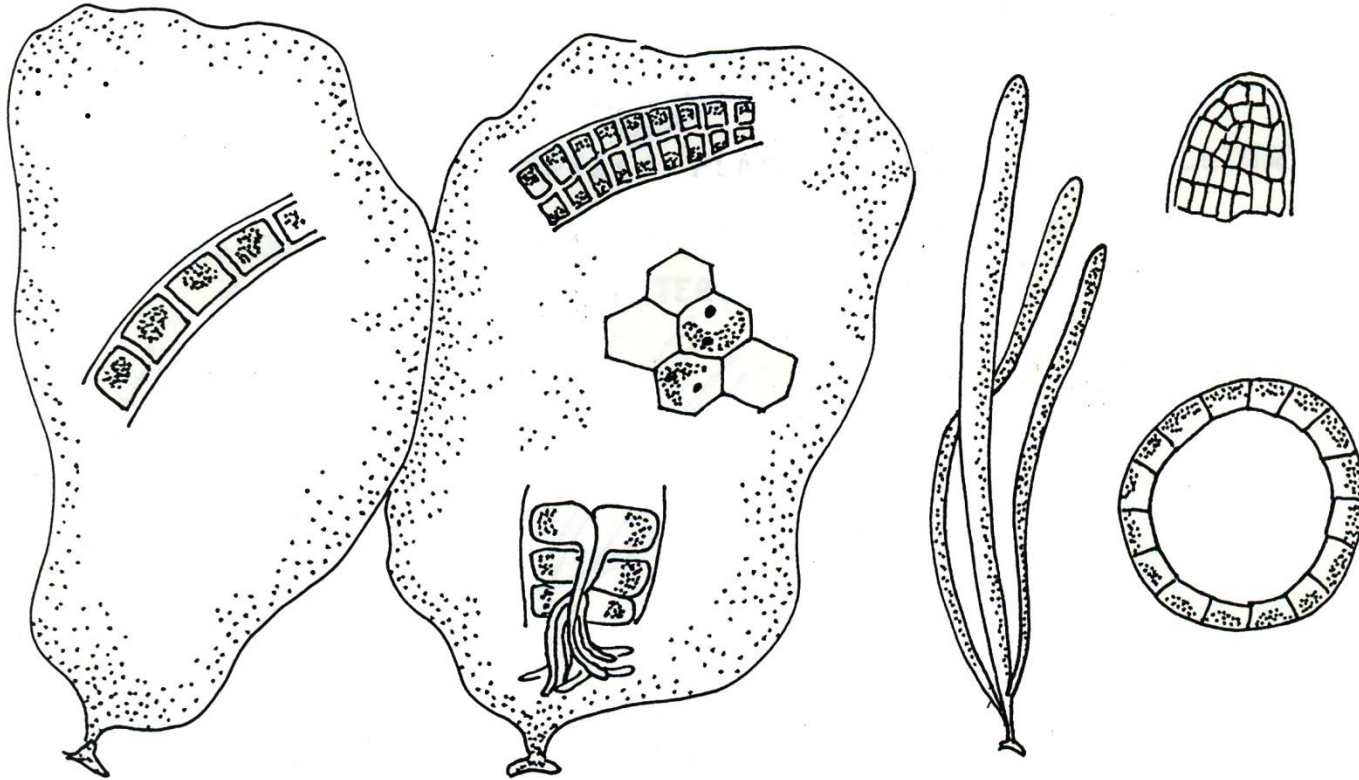


# THALLUS ORGANIZATION IN CHLOROPHYCEAE

## 8. PARENCHYMATOUS THALLUS ORGANIZATION

FOLIOSE THALLUS

TUBULAR THALLUS



**MONOSTROMA**

**ULVA**

**ENTEROMORPHA**

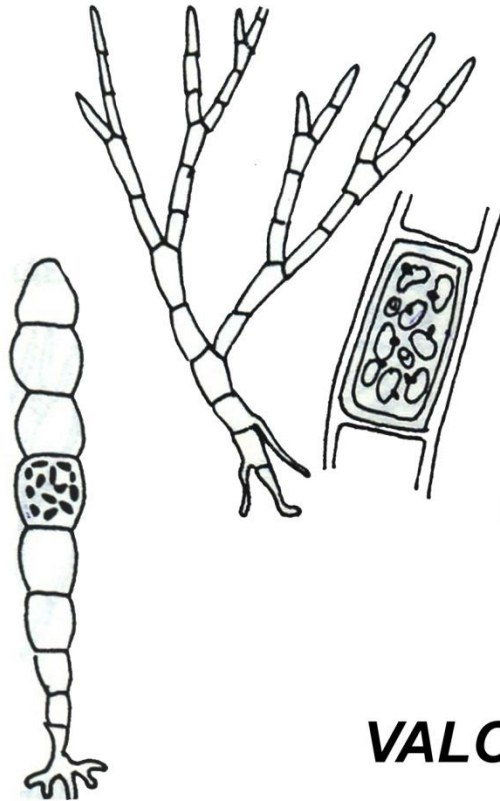
# THALLUS ORGANIZATION IN CHLOROPHYCEAE

## 9. SIPHONOCCLADUS THALLUS ORGANIZATION

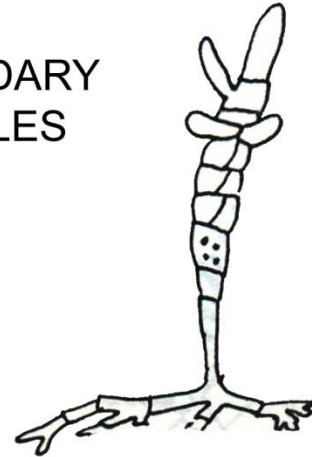
**CLADOPHORA**

**VALONIA**

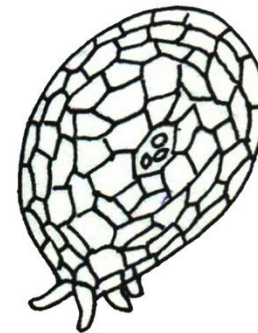
**SIPHONOCCLADUS**



SECONDARY  
VESICLES



**VALONIA**

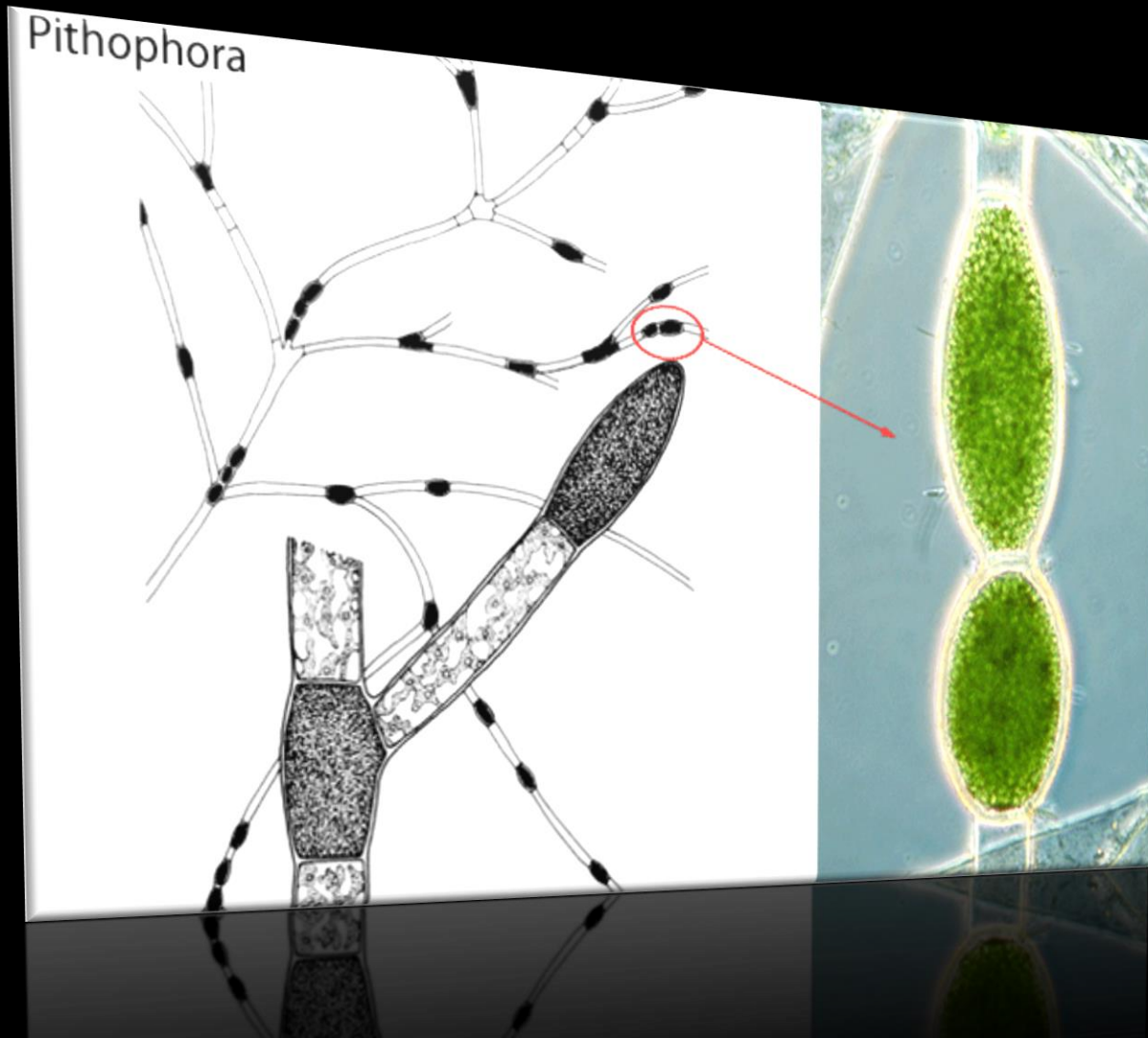


**CHAETOMORPHA**

**DICTYOSPHAERIA**

# SIPHONOCCLADUS

## THALLUS-*PITHOPHORA*



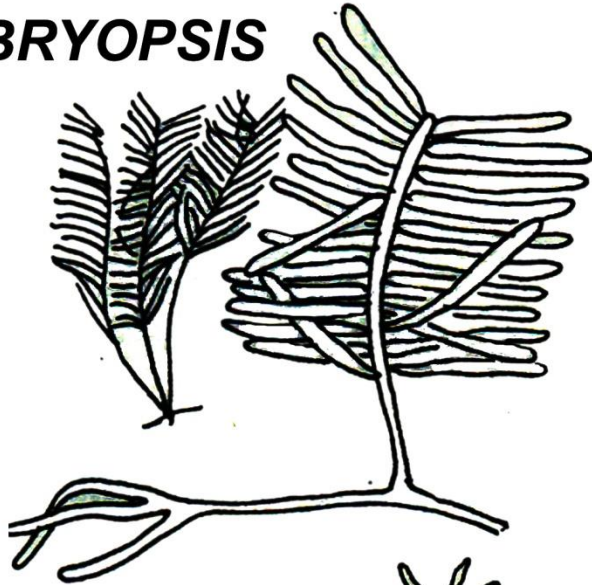
**SIPHONOCLADUS THALLUS-**  
***CHAETOMORPHA***



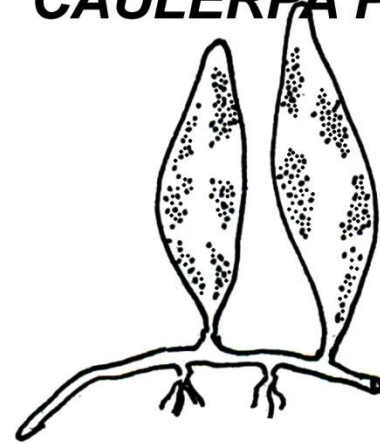
# THALLUS ORGANIZATION IN CHLOROPHYCEAE

## 10. SIPHONOUS THALLUS ORGANIZATION- UNIAXIAL CONSTRUCTION

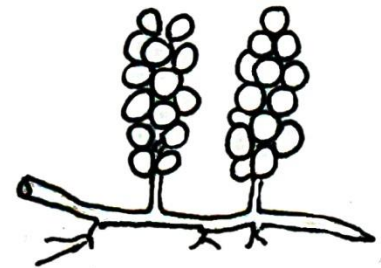
**BRYOPSIS**



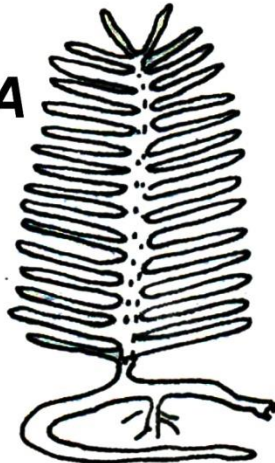
**CAULERPA PROLIFERA**



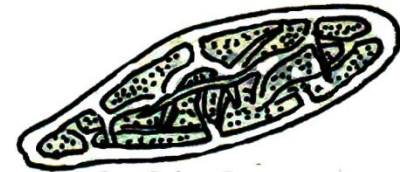
**C. RACEMOSA**



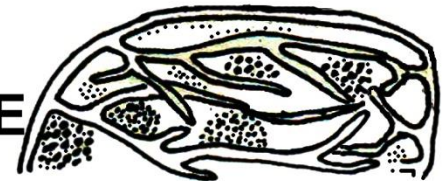
**C. TAXIFOLIA**



**C.S OF  
ASSIMILATOR**



**C.S. OF  
RHIZOME**



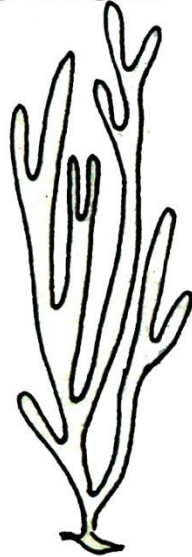


# THALLUS ORGANIZATION IN CHLOROPHYCEAE

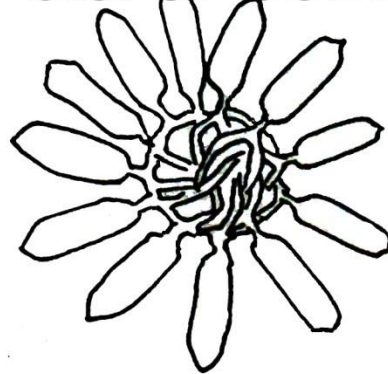
## 10. SIPHONOUS THALLUS ORGANIZATION

### MULTIAXIAL SIPHONOUS THALLUS

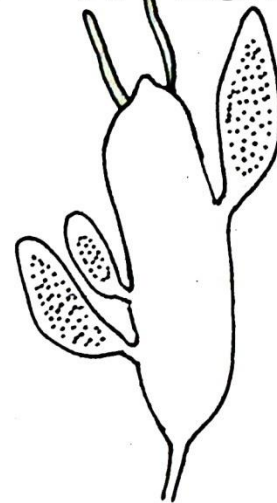
**CODIUM**



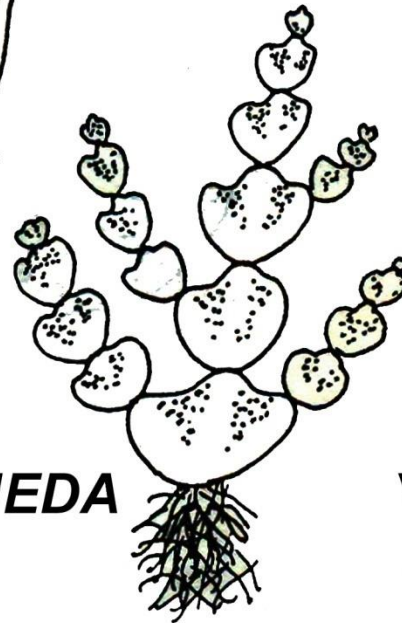
**C.S. OF CODIUM**



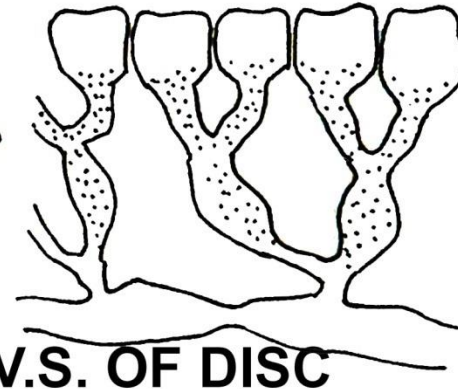
**A VESICLE**



**GAMETANGIUM**



**HALIMEDA**



**V.S. OF DISC**

THALLUS ORGANIZATION IN CHLOROPHYCEAE  
SIPHONOUS THALLUS ORGANIZATION  
UNIAXIAL SIPHONOUS THALLUS-DASYCLADALES

